

32MP PANORAMIC AR CAMERA - CODE: AR-PTZ-32-P



AR Camera Features

- Full HD 32MP
- Day & Night
- AR Functions (Listed Below)
- H.264/H.265 compression

AR Camera Specification

- 1/1.8" Progressive Scan CMOS
- Resolution: Max. 4 * 2048*1536 / 4 * 3840 × 2160 @ 30 fps in panorama display mode
- Minimum Illumination: Colour, 0.02lux, B/W, 0.001lux
- Panorama Field of View: Horizontal 180°, Vertical 90°
- Video Compression: H.265, H.264
- Power Supply: DC24V±10%, 4.3A, 18W max
- Operating Conditions: -40°C ~ 60°C (-40°F ~ +140°F)
- Ingress Protection: IP66
- Dimensions: 228 x 330mm
- Weight: 6.4Kg

NETWORK PARAMETER

- Support 10/100M Network Interface
- Supports Onvif protocols

AR Camera Functions

1. Real-time Location Computation of Target Objects

The AR camera accurately rotates to fixed positions, (static or dynamic objects), via real-time GPS, with the ability to add tags.

2. Video AR Processing

Based on AR encoding function, ARC integrates AR tag information with video stream.

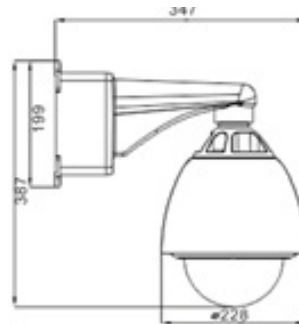
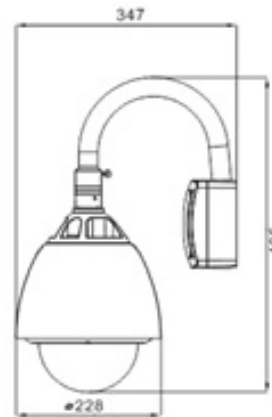
3. Embedded AR Bitstream, Compatible with H.264/H.265 Video Compression

4. Automatically Positioning and Timing

ARC can obtain its geographical coordinates (i.e., longitude, latitude and altitude), synchronizes time with satellites and perceives its orientation and pose in real time.

5. Orientation Perception

ARC can real-time obtain its own angle and orientation with automatically self-rotating.



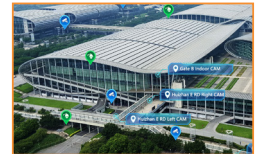
AR Functions

①



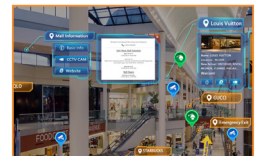
VIDEO WITH GEOGRAPHIC TAGS

②



VIDEO WITH SECURITY TAGS

③



AR VIDEO & DATA

④



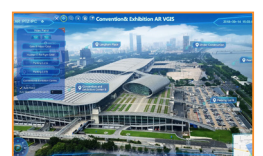
AR VIDEO WITH VIDEO LINKS WITH IPC CAMERAS & DVR/NVR

⑥



AR VIDEO RELAY

⑦



AR VIDEO PATROLLING